



Xynergi Media Production Centre

Installation Manual

11 February 2008

Rev A

Issue 001

IMPORTANT NOTICE

Copyright

The material in this document is copyright to Fairlight.AU Pty Ltd, and may not be quoted or reproduced in any form without written permission from the company.

Fairlight is a trademark of FairlightAU Pty Ltd. All other trademarks are the property of their respective owners.

Limited Warranty Policy

All the software and hardware provided with, or purchased especially for, Fairlight products has been tested for functionality. FairlightAU Pty Ltd will make its best efforts to correct reported defects for future releases subject to technical practicalities. FairlightAU will also replace any defective media on which software has been delivered provided that the item to be replaced is returned to the dealer who supported the product within 90 days of purchase.

FairlightAU Pty Ltd makes no warranty or representation either expressed or implied with respect to the system's performance or fitness for a particular purpose.

In no event will FairlightAU Pty Ltd be liable for direct or indirect damages arising from any defect in the product or its documentation. Further, FairlightAU Pty Ltd will not accept any liability for any programs, sounds, audio recording or sequences stored in or used with Fairlight products, including the cost of recovery of such data.

Product features and specifications are subject to change without notice. Fairlight.AU reserves the right to change any part of this document without notice.

The warranties, remedies and disclaimers above are exclusive and take precedence over all others, oral or written, express or implied, to the extent permitted by law in the geographical area of the product's use. No employee of Fairlight.AU, agent, distributor or employee of an agent or distributor is authorized to offer any variation from this policy.

Copyright © 2008
FairlightAU Pty Ltd,
Unit 3, 15 Rodborough Rd,
Frenchs Forest, NSW 2086,
AUSTRALIA.
Telephone +61 2 9975 1777
Fax +61 2 9975 1999

End User License Agreement

You have acquired a device ("DEVICE") which includes software licensed by FairlightAU from one or more software licensors ("FairlightAU's Software Suppliers"). Such software products, as well as associated media, printed materials, and "online" or electronic documentation ("SOFTWARE") are protected by international intellectual property laws and treaties. The SOFTWARE is licensed, not sold. All rights reserved.

IF YOU DO NOT AGREE TO THIS END USER LICENSE AGREEMENT ("EULA"), DO NOT USE THE DEVICE OR COPY THE SOFTWARE. INSTEAD, PROMPTLY CONTACT Fairlight.AU FOR INSTRUCTIONS ON RETURN OF THE UNUSED DEVICE(S) FOR A REFUND. ANY USE OF THE SOFTWARE, INCLUDING BUT NOT LIMITED TO USE ON THE DEVICE, WILL CONSTITUTE YOUR AGREEMENT TO THIS EULA (OR RATIFICATION OF ANY PREVIOUS CONSENT).

GRANT OF SOFTWARE LICENSE. This EULA grants you the following license:

- You may use the SOFTWARE only on the DEVICE.
- NOT FAULT TOLERANT. THE SOFTWARE IS NOT FAULT TOLERANT. Fairlight.AU HAS INDEPENDENTLY DETERMINED HOW TO USE THE SOFTWARE IN THE DEVICE, AND FairlightAU'S SOFTWARE SUPPLIERS HAVE RELIED UPON FairlightAU TO CONDUCT SUFFICIENT TESTING TO DETERMINE THAT THE SOFTWARE IS SUITABLE FOR SUCH USE.
- NO WARRANTIES FOR THE SOFTWARE. THE SOFTWARE is provided "AS IS" and with all faults. THE ENTIRE RISK AS TO SATISFACTORY QUALITY, PERFORMANCE, ACCURACY, AND EFFORT (INCLUDING LACK OF NEGLIGENCE) IS WITH YOU. ALSO, THERE IS NO WARRANTY AGAINST INTERFERENCE WITH YOUR ENJOYMENT OF THE SOFTWARE OR AGAINST INFRINGEMENT. IF YOU HAVE RECEIVED ANY WARRANTIES REGARDING THE DEVICE OR THE SOFTWARE, THOSE WARRANTIES DO NOT ORIGINATE FROM, AND ARE NOT BINDING ON, Fairlight.AU'S SOFTWARE SUPPLIERS.
- Note on Java Support. The SOFTWARE may contain support for programs written in Java. Java technology is not fault tolerant and is not designed, manufactured, or intended for use or resale as online control equipment in hazardous environments requiring fail-safe performance, such as in the operation of nuclear facilities, aircraft navigation or communication systems, air traffic control, direct life support machines, or weapons systems, in which the failure of Java technology could lead directly to death, personal injury, or severe physical or environmental damage. Sun Microsystems, Inc. has contractually obligated FairlightAU's Software Suppliers to make this disclaimer.
- No Liability for Certain Damages. EXCEPT AS PROHIBITED BY LAW, FairlightAU's SOFTWARE SUPPLIERS SHALL HAVE NO LIABILITY FOR ANY INDIRECT, SPECIAL, CONSEQUENTIAL OR INCIDENTAL DAMAGES ARISING FROM OR IN CONNECTION WITH THE USE OR PERFORMANCE OF THE SOFTWARE. THIS LIMITATION SHALL APPLY EVEN IF ANY REMEDY FAILS OF ITS ESSENTIAL PURPOSE. IN NO EVENT SHALL FairlightAU's SOFTWARE SUPPLIERS BE LIABLE FOR ANY AMOUNT IN EXCESS OF U.S. TWO HUNDRED FIFTY DOLLARS (U.S.\$250.00).
- Limitations on Reverse Engineering, Decompilation, and Disassembly. You may not reverse engineer, decompile, or disassemble the SOFTWARE, except and only to the extent that such activity is expressly permitted by applicable law notwithstanding this limitation.
- SOFTWARE TRANSFER ALLOWED BUT WITH RESTRICTIONS. You may permanently transfer rights under this EULA only as part of a permanent sale or transfer of the Device, and only if the recipient agrees to this EULA. If the SOFTWARE is an upgrade, any transfer must also include all prior versions of the SOFTWARE.

Obtaining Technical Support

Users requiring technical support should contact their local distributor.

Information can also be found on the World Wide Web at:

<http://www.fairlightau.com>

Manual Errors and Omission

To help ensure that Fairlight provides the most accurate and comprehensive documentation, please report any errors or omissions to:

documentation@fairlightau.com

USING THE UNIT SAFELY

Instructions for the prevention of fire, electric shock, or injury to persons

ALWAYS OBSERVE THE FOLLOWING

WARNING

- Before using this unit, make sure to read the instructions below;
- Do not open (or modify in any way) the unit.
- Do not attempt to repair the unit, or replace parts within it (except when this manual provides specific instructions directing you to do so). Refer all servicing to your retailer/or the nearest Fairlight Distributor.
- Never use or store the unit in places that are:
 - Subject to temperature extremes (e.g., direct sunlight in an enclosed vehicle, near a heating duct, on top of heat-generating equipment); or are
 - Damp (e.g., baths, washrooms, on wet floors); or are
 - Humid; or are
 - Exposed to rain; or are
 - Dusty; or are
 - Subject to high levels of vibration.
- Make sure you always have the unit placed so it is level and sure to remain stable. Never place it on stands that could wobble, or on inclined surfaces.
- Do not allow any objects (e.g., flammable material, coins, pins); or liquids of any kind (water, soft drinks, etc.) to penetrate the unit.
- Immediately disconnect the USB cable, and request servicing by your retailer or the nearest Fairlight Distributor when:
 - If smoke or unusual odor occurs
 - Objects have fallen into, or liquid has been spilled onto the unit; or
 - The unit has been exposed to rain (or otherwise has become wet); or
 - The unit does not appear to operate normally or exhibits a marked change in performance.
- In households with small children, an adult should provide supervision until the child is capable of following all the rules essential for the safe operation of the unit.
- Protect the unit from strong impact. (Do not drop it!)

CAUTION

- Try to prevent cords or cables from becoming entangled. Also, all cords and cables should be placed so they are out of the reach of children.

- Never climb on top of, or place heavy object on the unit.
- Disconnect all cords coming from external devices before moving the unit.

IMPORTANT NOTES

In addition to the items listed under "USING THE UNIT SAFELY", please read and observe the following:

Placement

- This device may interfere with radio and television reception. Do not use this device in the vicinity of such receivers.
- Noise may be produced if wireless communication devices, such as cell phones, are operated in the vicinity of this unit. Such noise could occur when receiving or initiating a call, or while conversing. Should you experience such programs, you should relocate such wireless devices so they are at a greater distance from this unit or switch them off.
- Do not expose the unit to direct sunlight, place it near devices that radiate heat, leave it inside an enclosed vehicle, or otherwise submit it to temperature extremes. Excessive heat can deform to discolour the unit.
- When moved from one location to another where the temperature and/or humidity is very different, water droplets (condensation) may form inside the unit. Damage or malfunction may result in you attempt to use the unit in his condition. Therefore, before using the unit, you must allow it to stand for several hours, until the condensation has completely evaporated.

Maintenance

- For everyday cleaning wipe the unit with a soft, dry cloth or one that has been slightly dampened with water. To remove stubborn dirt, use a cloth impregnated with mild, non-abrasive detergent. Afterward, be sure to wipe the unit thoroughly with a soft, dry cloth.
- Never use benzene, thinners, alcohol or solvents of any kind, to avoid the possibility of discolouration and /or deformation.

Additional Precautions

- Use a reasonable amount of care when using the unit's buttons, or other controls. Rough handling can lead to malfunctions.
- When connecting / discontenting all cables, grasp the connector itself – never pull on the cable. This way you will avoid causing shorts, or damage to the cable's internal elements.
- When you need to transport the unit, pack it in shock-absorbent material. Transporting the unit without doing so can cause it to become scratched or damaged, and could lead to malfunction.

Table of Contents

USING THE UNIT SAFELY	vi
ALWAYS OBSERVE THE FOLLOWING.....	vi
CAUTION.....	vi
IMPORTANT NOTES	vii
Placement.....	vii
Maintenance	vii
Additional Precautions	vii
CHAPTER 1 - INTRODUCTION	1
Welcome to Xynergi	1
CHAPTER 2 – INSTALLATION STEPS	2
The Host PC.....	2
Installing the Crystal card	3
Installing the SX20	3
Connecting the SX-20.....	4
Monitor Speaker connections	5
Installing the XYNERGI software	5
CHAPTER 3 – INSTALLING YOUR CONTROLLER	11
Installing the Xynergi “USB2VGA” driver	11
Connecting your Xynergi Controller.....	12
CHAPTER 4 – LAUNCHING XYNERGI FOR THE FIRST TIME	14
Starting Xynergi	14
Designating Fairlight Media Devices.....	14
Learning the Xynergi Application	19
Xplain-button	19
Xplain How-To	19
Xynergi Fold-Out	20
The Demo Project	20
CHAPTER 5 - ADDING YOUR FADER SURFACE	21
Note: This section is for models MPC-144F and MPC230F Only.....	21
Fader Surface Hardware Installation	21
XYNERGI Software Calibration.....	21
Console Brightness	22
Touch Sensitivity	22
Encoder Calibration	23
Fader Calibration	23
LCD Calibration	23
CHAPTER 6 - TROUBLESHOOTING YOUR XYNERGI INSTALLATION	25
CC-1 PCI-e card Checklist	25
SX20 Power Up Checklist	25
Xynergi Controller Checklist.....	25

Chapter 1 - Introduction

Welcome to Xynergi

You are now the owner of the most powerful audio editing system available today. While the technology involved is highly advanced, installation is relatively straight forward.

You should allow at least 1 hour for a complete installation, from fitting the hardware to a full installation of the software.

Relax, take your time, be patient, follow this guide to the letter and you will ultimately be rewarded with a Xynergized experience.

The following document seeks to give a product overview and Quick Start Installation Guide for the "Xynergi" Media Production Centre.

Xynergi is based on recently-invented patented technologies, and incorporates decades of experience in digital audio and its applications in the production environment.

The Xynergi MPC is suitable for surround mixing to picture, or full-scale music production. Every system up and down the scale uses a consistent user interface and file structure, allowing easy migration of projects from edit bay to mixing room.

Xynergi MPC provides digital mixing designed specifically for post production facilities engaged in advertising production, television and radio, and feature films.

Chapter 2 – Installation Steps

The Host PC

The Xynergi System requires a suitably specified Host PC to install and operate correctly. Fairlight use and recommend standard DELL 390 Precision Workstations for smaller systems, and HP XW8400 Dual Processor Workstations for larger applications. Windows XP Professional SP2 32 bit version is the recommended Operating System.

Windows Vista is NOT supported at this time.

The Xynergi Media Production Centre is best operated with a dual monitor system as a baseline minimum, Fairlight recommend NVidia "Dual Head" VGA cards with at least 256Mb onboard graphic memory.

NOTE! For systems requiring High Definition Video playback capability, a "Dual Head" VGA card of 512Mb onboard graphic memory is the minimum specification.

Please ensure that the VGA settings for each of the 2 monitors on your system are either

- 1024 X 768 – 32 bit colour
- or
- 1280 X 1024 – 32 bit colour

To provide adequate storage capacity and data bandwidth, Fairlight recommend a minimum of 1 X hard drive for the Windows Operating System, XYNERGI, and other software, and a RAID0 "Stripe set" of at least 2 X SATA hard drives for Audio.

To guarantee 96 tracks of simultaneous audio playback, it is critical that 10,000RPM SATA drives be used for the Audio "Stripe Set". (Number of tracks subject to System License).

Xynergi also supports drag and drop import of a variety of video file formats, as well as direct video recording to the Xynergi timeline.

For correct operation, video files must be played from and recorded to a separate hard disk, independent of the Audio RAID0 Stripe Set, and the "Operating System" hard drive.

****WARNING: IF YOU ATTEMPT TO PLAY VIDEO AND AUDIO DATA FROM THE SAME HARD DISK, YOU WILL EXPERIENCE SEVERE PERFORMANCE PROBLEMS!!**

The disk bandwidth required for video is governed by the video file format and codec you wish to play back. Some types of compressed Standard Definition video may play back from a single 10,000 RPM SATA drive, while uncompressed High Definition Video requires a large, fast RAID array. Please contact your Fairlight distributor to discuss your specific needs.

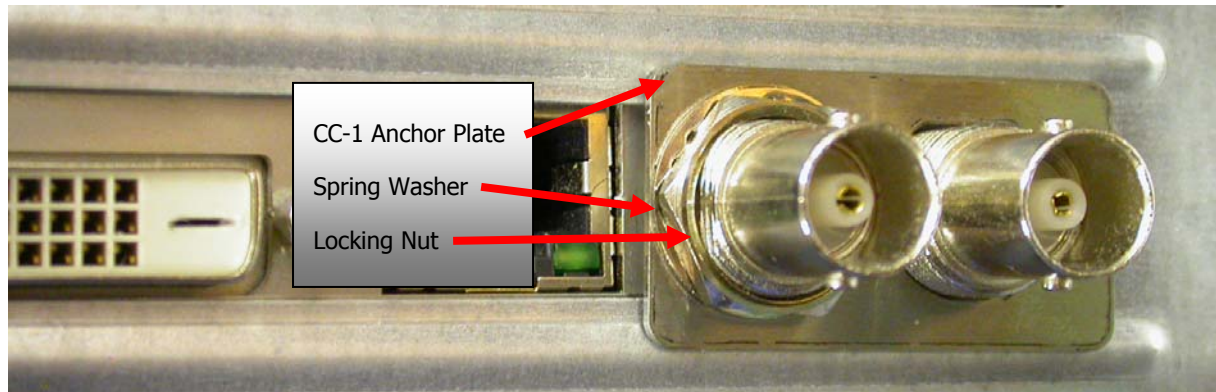
For those Xynergi users who prefer to build their own Host PC, see your nearest Fairlight Distributor for detailed configuration specifications.

To assist you in handling online documentation and QuickTime media files, it is recommended that Adobe's Acrobat Reader and the latest QuickTime player applications be installed on the system.

Installing the Crystal card

The Crystal Audio Engine will physically install into any standard PCI-e “4-lane” slot. The following XYNERGI software installation will automatically install the required Windows drivers to address the card.

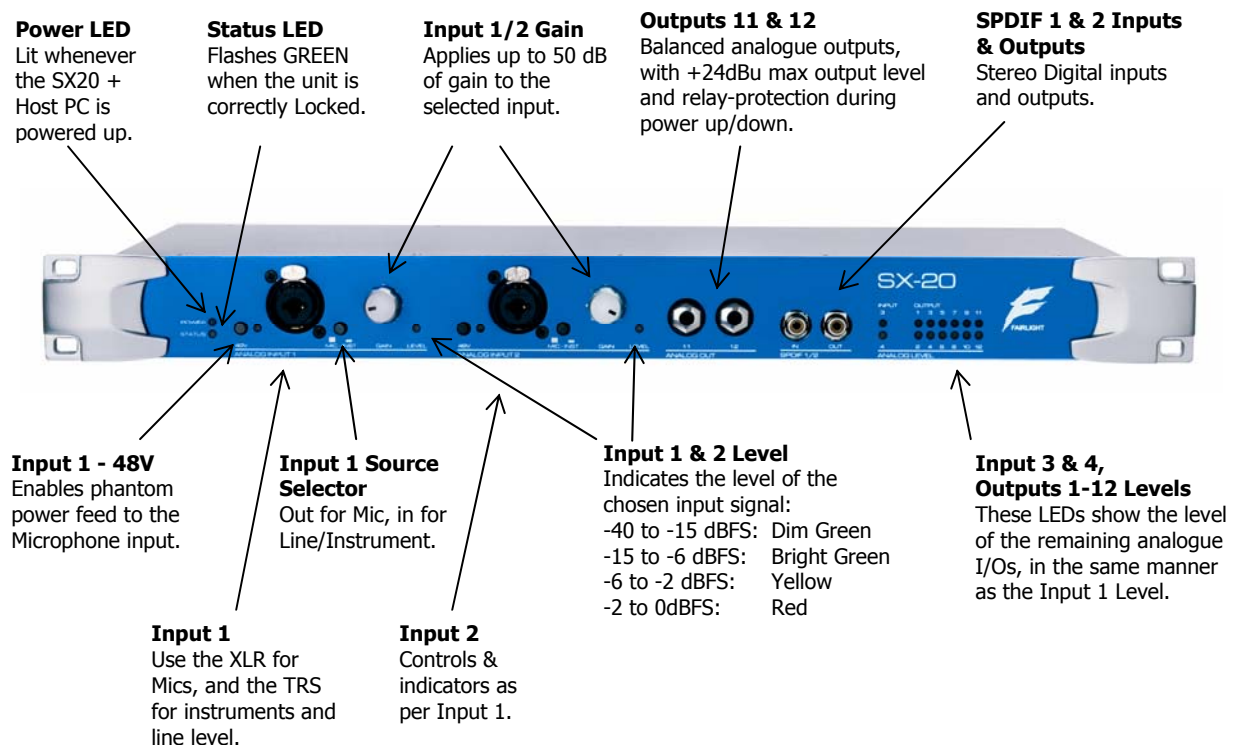
The CC-1 card is shipped with a locking plate, spring washer, and locking nut. It is recommended to install these over the BNC MADI connectors of the CC-1 card, to ensure it is firmly anchored within the PC chassis.



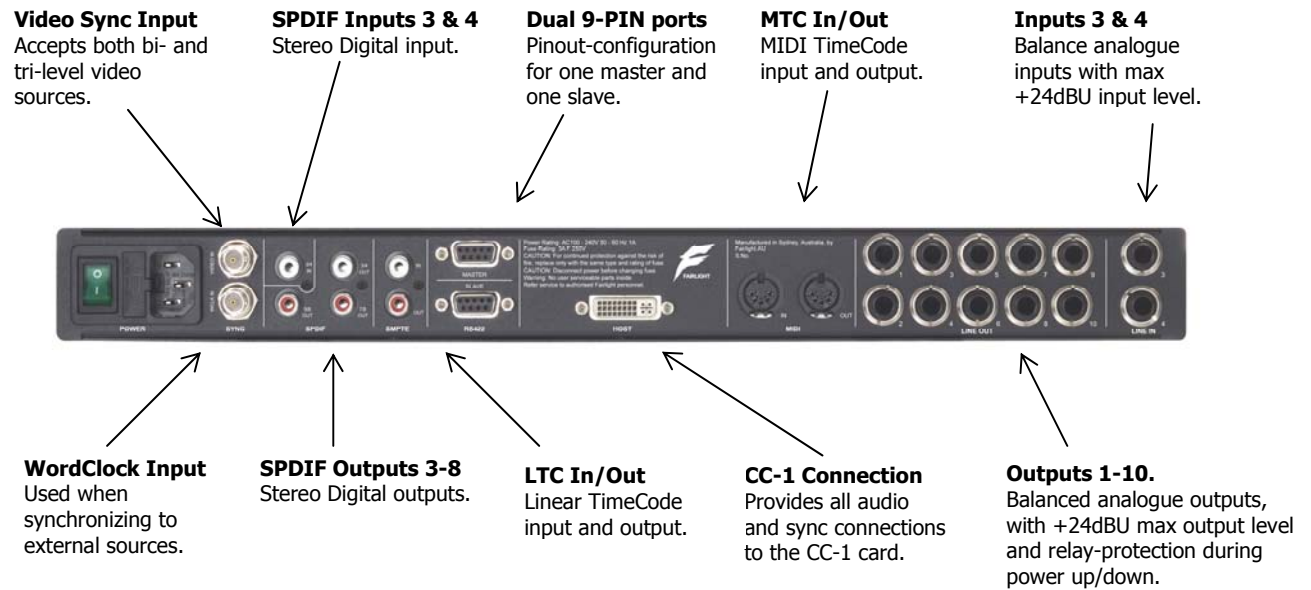
Installing the SX20

The SX20 I/O box provides the basic balanced analogue and SPDIF interfacing for the system, along with sync inputs, LTC and RS422 deck control.

The SX20 front panel provides access to flexible patching of analogue and digital inputs and outputs.



Intended for more permanent connections, the backplate houses further digital and analogue connections, as well as synchronization and control ports:



Connecting the SX-20



The SX-20 connects to the CC-1 card using the supplied DVI-I dual link cable, and to mains supply using a standard IEC lead. Ensure that both the PC and the SX-20 are turned OFF before fitting the DVI cable.

Please note that the supplied DVI-I SX20 Interconnect cable is 2 metres/6' long. Fairlight recommend a Maximum length of 5 metres/15' for reliable operation of your SX20.

Ensure that the DVI-I cable is anchored securely to the CC-1 card and SX20 with the integral thumbscrews. This is important to ensure correct operation of the CC-1 card and SX20.

Once the primary mains switch on the back of the unit is switched on, the SX-20 automatically switches on and off in tandem with the PC/CC-1 that it is connected to.

Do not turn on the SX20 unit at this point.

Monitor Speaker connections

The SX20 has enough outputs to handle up to 7.1 monitor speaker systems. It is assumed, however, that either Stereo or 5.1 monitor systems will be the most commonly used configuration. The SMPTE specification for 5.1 surround monitor systems dictates the following Output patching configuration for a 5.1 system:

1. Output 1 – Left Main Output
2. Output 2 – Front Centre Output
3. Output 3 – Right Main Output
4. Output 4 – Left Surround/Rear Output
5. Output 5 – Right Surround/Rear Output
6. Output 6 – Sub-woofer output

If you are configuring your system for “Full Time Stereo” monitoring operation, it is recommended that you use Outputs 1 and 3 for your Left and Right monitor speaker feeds. This will allow easy conversion to 5.1 at a later stage, and will simplify the interaction between the Xynergi system and your monitoring speaker rig.

With your monitor speakers now connected, please turn your power amplifiers down, and switch the SX20 unit on.

The SX20 will not give any front panel indication that it is powered up at this point, as it requires Host PC and CC-1 card to be operating in order to “power up”. This is normal.

Installing the XYNERGI software

NB That while the Xynergi Controller will fulfill the functions of your regular keyboard once installed correctly, a normal Keyboard and mouse will be required to complete the initial software installation!!!

Xynergi is a fully capable editing and mixing environment, comprising 2 distinct applications.

The Xynergi Editing area is used for arranging, editing, recording, and processing all audio and video clips in a given project.

The Xynergi Mixing area is the interface between your Xynergi controller and the Editing area. It gives access to the advanced routing, mixing, patching, and audio handling functions one would expect from a fully-featured mixing console.

To install your Xynergi software:

- Power on the computer, and ensure you are logged on with Full Administrator Privileges, preferably in the account you intend to operate your Xynergi Media Production centre.

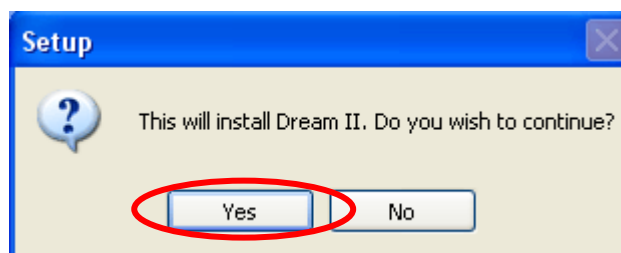
Windows *SHOULD* detect the card as a “default” → [PCI to PCI Bridge](#) (Found new hardware PCI device) and bring up the “Found New hardware” Wizard:

- Click <Cancel>.

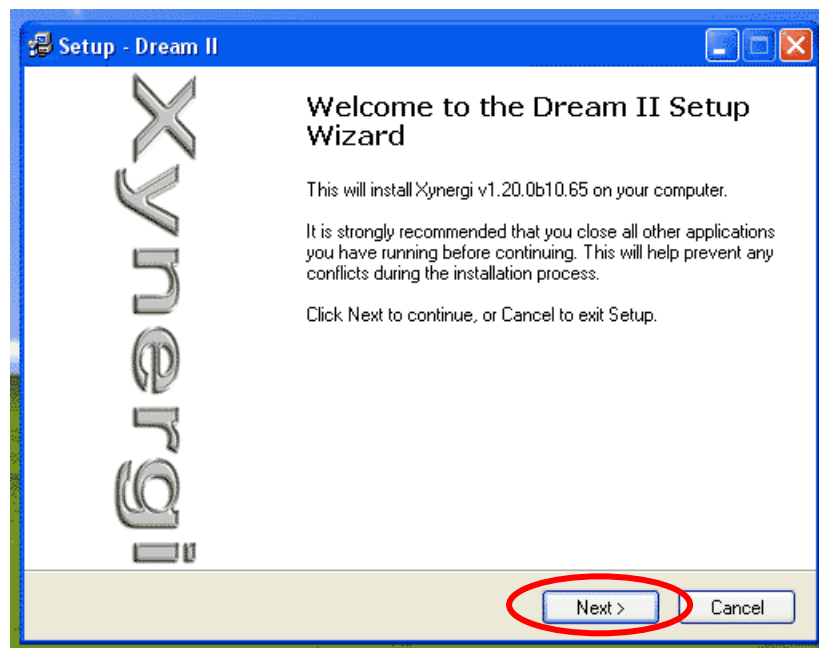


Please Note: If this window does NOT appear, please power down your PC, and ensure that the CC-1 card is installed correctly. It must be seated firmly in its PCI-e slot, and have the Locking Plate installed.

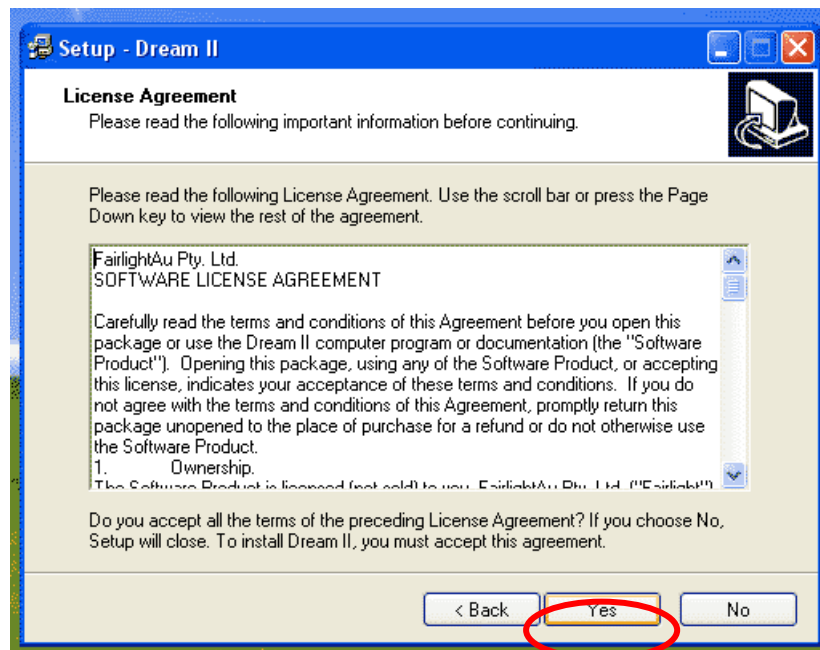
- Now insert the supplied XYNERGI software DVD into your Host PC, a pop-up menu will appear.
- click the "Install Xynergi Applications" button.



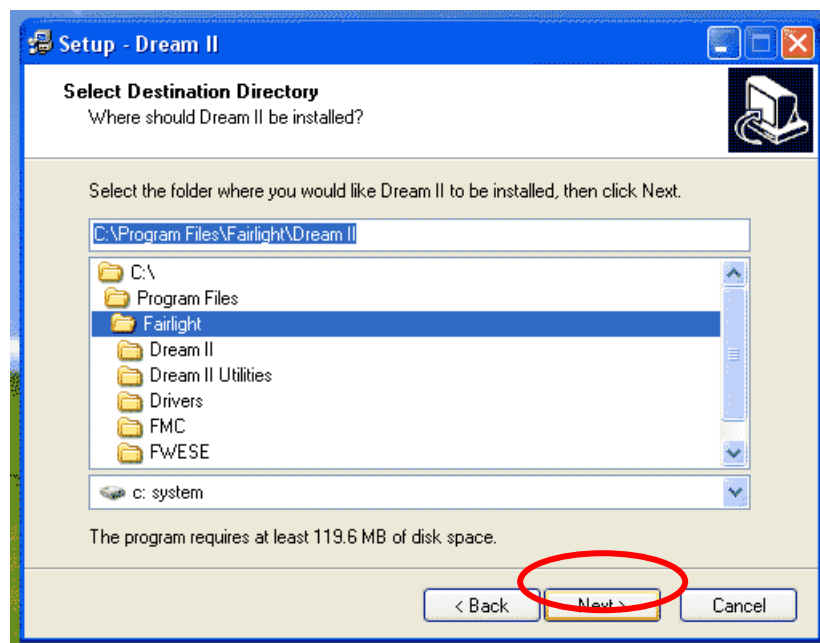
- Click "Yes"



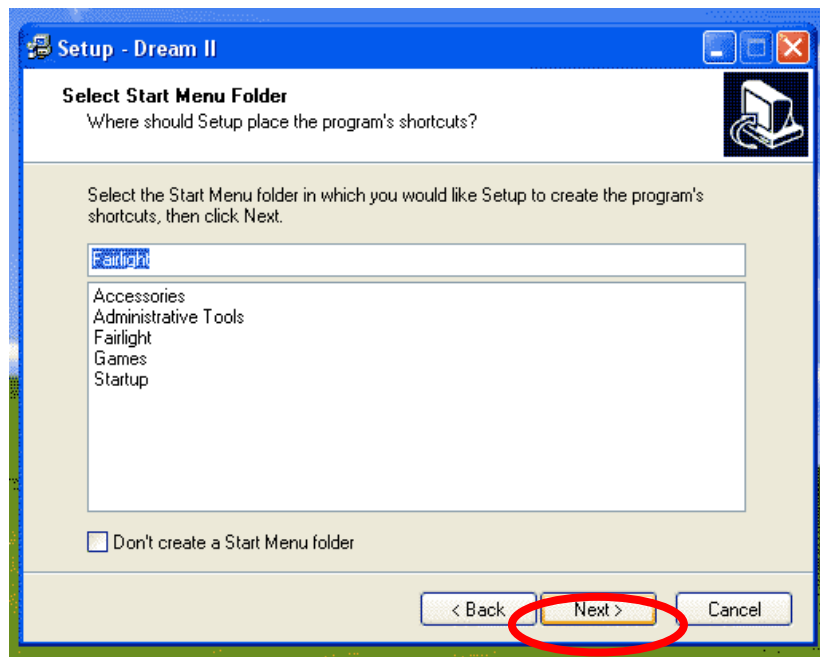
- Click "Next"



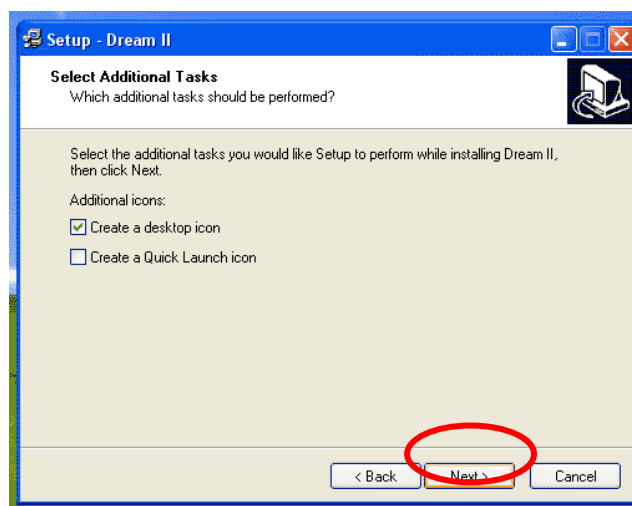
- Click "YES" to accept the License Agreement



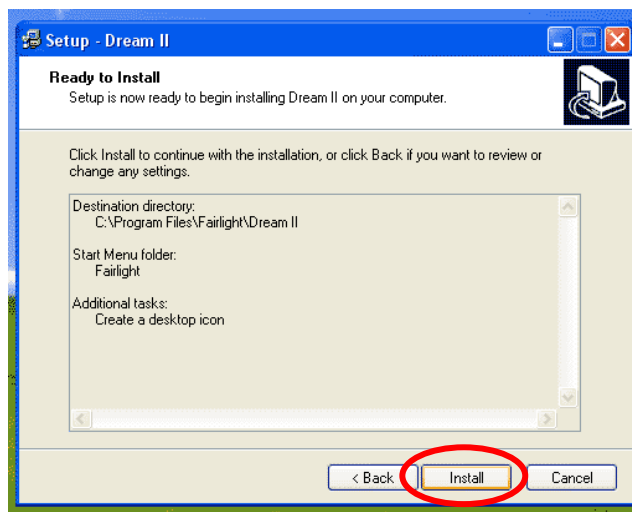
- It is STRONGLY recommended that you accept the default Installation folder location.
- Click "Next"



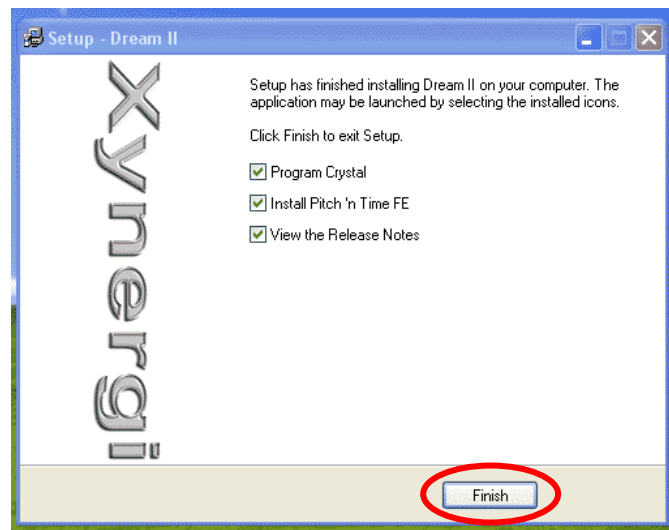
- Click "Next"



- If you wish to add a Quick Launch icon to the task bar, tick "Create Quick Launch icon"
- Click "Next"

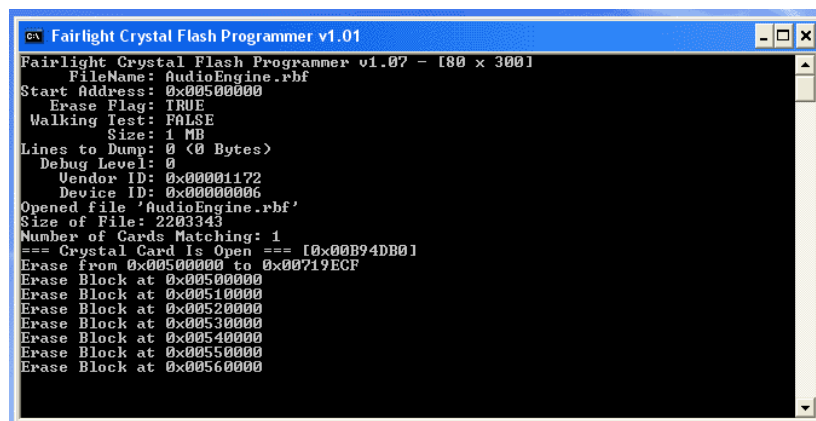


- Click “Install” to begin the software Installation

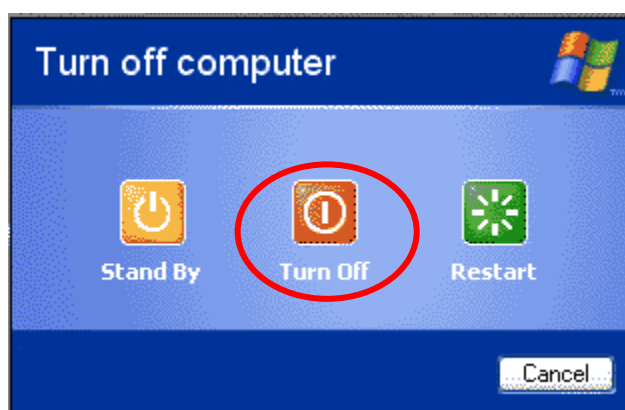


- Once the software installation is complete, ensure all boxes on this window are ticked, and click “Finish”.
- Please note that Serrato “Pitch ‘n Time FE” will install an Evaluation version. You can purchase the Full Version of this application by visiting the Serrato Website at

<http://www.serato.com/purchase>



- The system will now perform a “Flash Program” of the CC-1 crystal card.
This application will simply close itself once it is complete.
- If you have optioned to install the Serrato “Pitch ‘n Time FE” plug-in, you will now be led through the “Pitch ‘n Time FE” installation process. Please follow the prompts.
- Once the installation has completed, it is strongly recommended that you SHUT DOWN the Host PC, and then perform a COLD BOOT of the System.



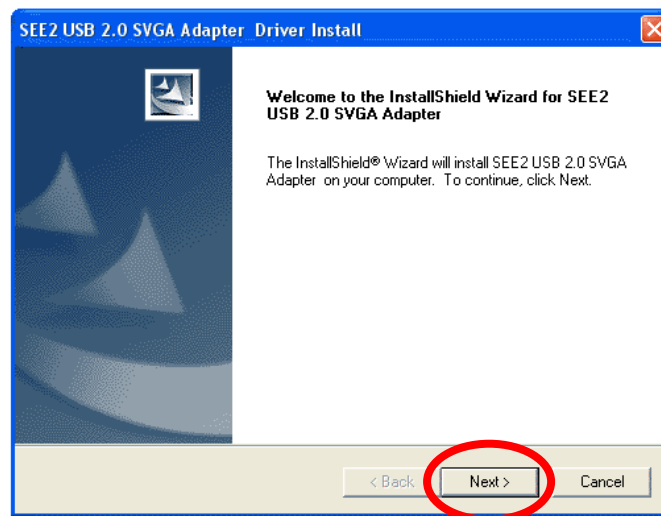
Chapter 3 – Installing your Controller

The XYNERGI Media Production Centre includes the Xynergi Controller, and can be optioned with an additional "Sidecar" fader unit.

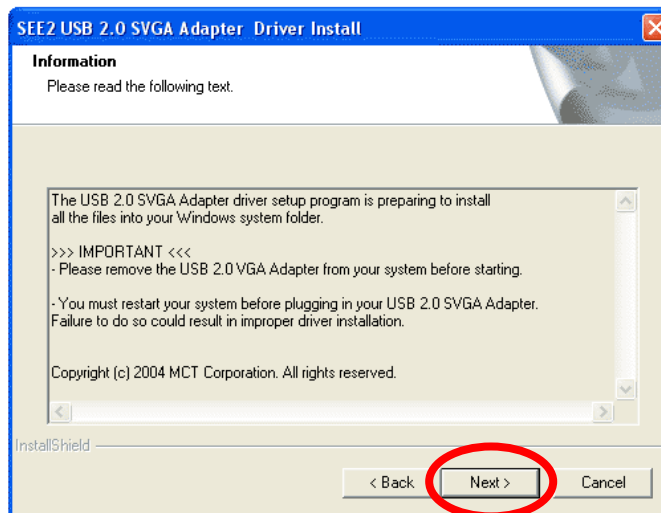
Installing the Xynergi "USB2VGA" driver

****WARNING: DO NOT CONNECT YOUR XYNERGI CONTROLLER TO THE PC AT THIS TIME!**

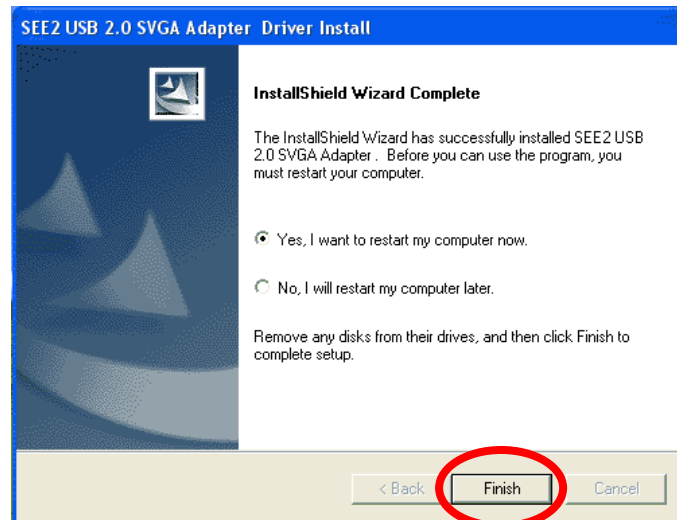
- Re-insert the supplied XYNERGI software DVD, a pop-up menu will appear.
- click the "Install Xynergi Driver" button.



- Click "Next"



- Click "Next"



- Click "Finish"

Xynergi will now reboot.

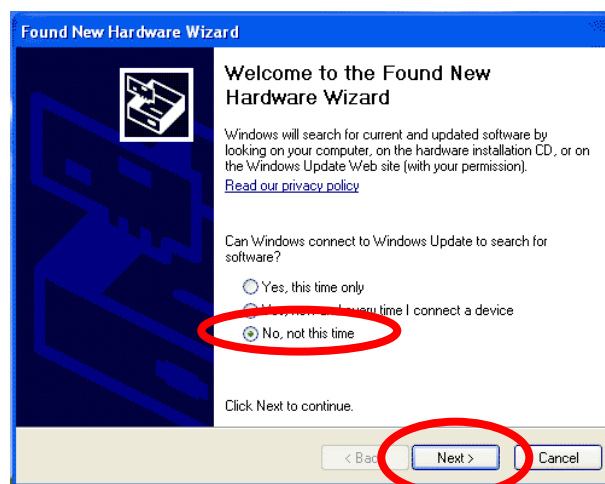
Connecting your Xynergi Controller

It is now time to connect the power to your Xynergi Controller, using a suitable 2-core mains cable and supplied power supply unit.

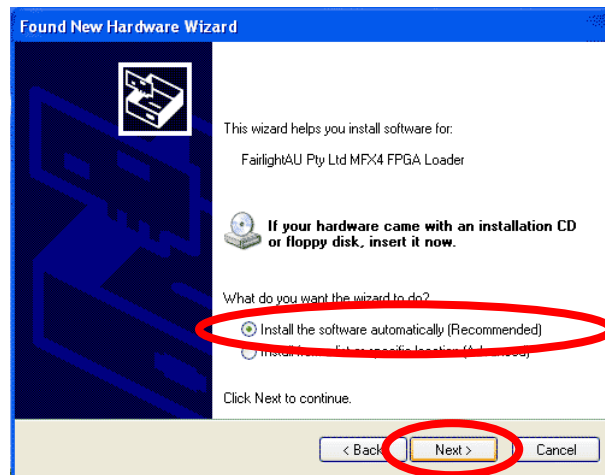
With the power connected to the controller, it is ready to be connected to the PC, using the supplied USB cable. Please ensure that the cable is connected to a USB2.0 specification port on the host PC. It is recommended that the controller be connected directly to the PC, and not via any intermediate USB hubs or other devices.

If the Host PC has detected your Xynergi Controller correctly, the ESC key at top left will begin flashing **BLUE**. During this time, the Xynergi Controller is calibrating the 8 encoder controls on either side of the main screen. Please **DO NOT** touch the encoder controls until the ESC key has **STOPPED** flashing.

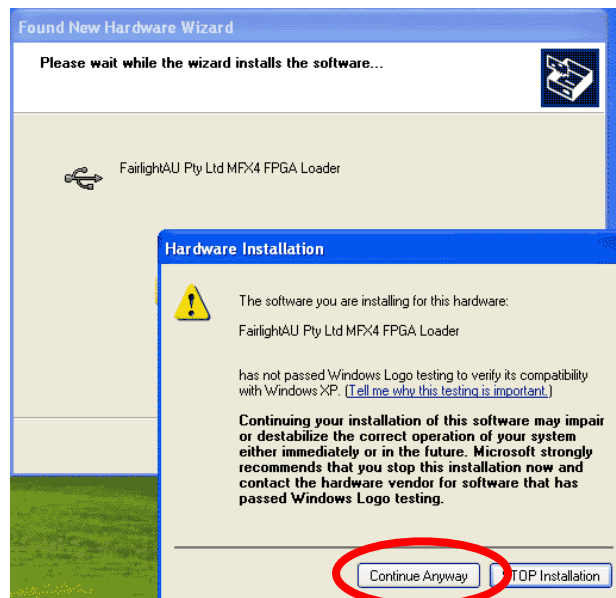
With Calibration of the Xynergi Controller complete, the Host PC will proceed to install the required drivers. The process to install these is common for all 4 driver devices.



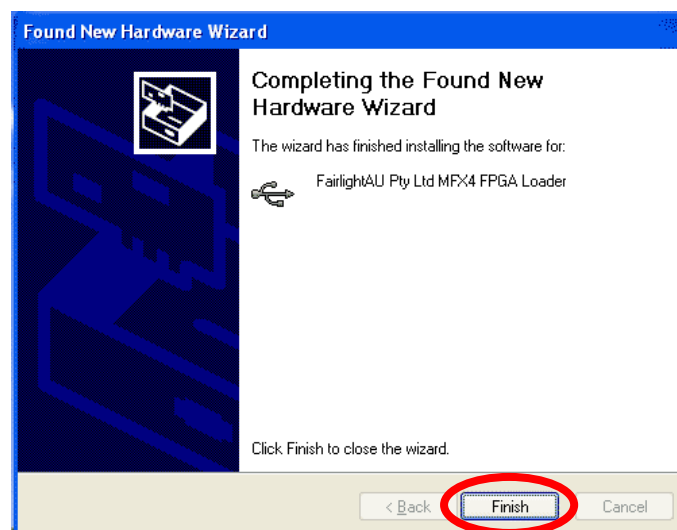
- Select "No, Not this time"
- Click "Next"



- Select "Install the Software automatically (Recommended)"
- Click "Next"



- Click "Continue Anyway"



- Click "Finish"

Please repeat the above process for all 3 device drivers, and restart your machine.

Chapter 4 – Launching Xynergi for the First Time

With all of the Xynergi drivers and software installed, and the Xynergi Controller correctly connected to your Host PC, you are now ready to start the Xynergi application, for further configuration.

Starting Xynergi

The Xynergi Controller starts up when your PC boots, and presents a QWERTY keyboard that you can use to log in.

The “F” key, at bottom left of the main qwerty keyboard, is used to access a “Switch Layout” where you can choose applications to launch.



- Please press the “F” key at bottom left of your Xynergi controller now

Included on the Switch Layout is a “Xynergi” application button.



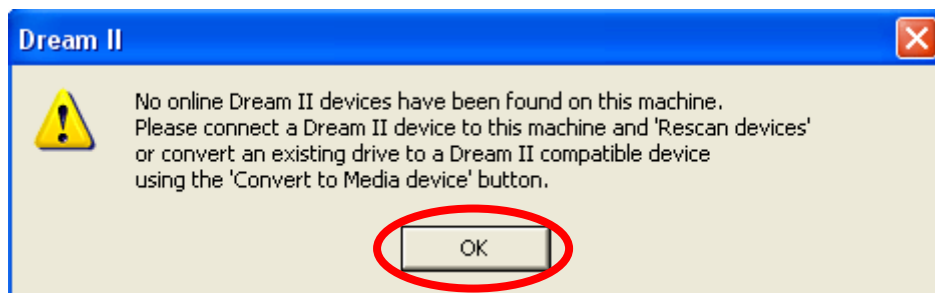
- Press this button to launch the Xynergi software.

Designating Fairlight Media Devices

Fairlight software only records on hard drives that you have allocated for this purpose. Doing this **does not erase any of your existing files, or reduce the performance in any way**. It just protects the other drives.

** Please note that audio and video files can only be played from a designated Media Device. If you try to play files from any other disk, you will receive an error message.

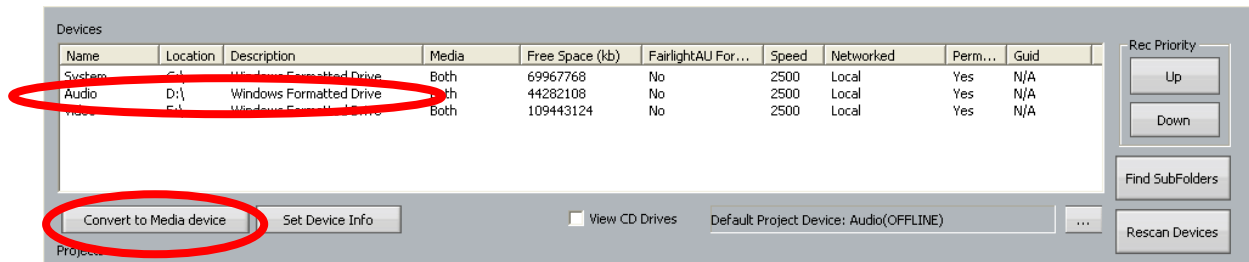
- When XYNERGI is started for the first time it displays a dialogue box requesting that at least 1 hard drive on the machine be converted to a “Fairlight Media Device”



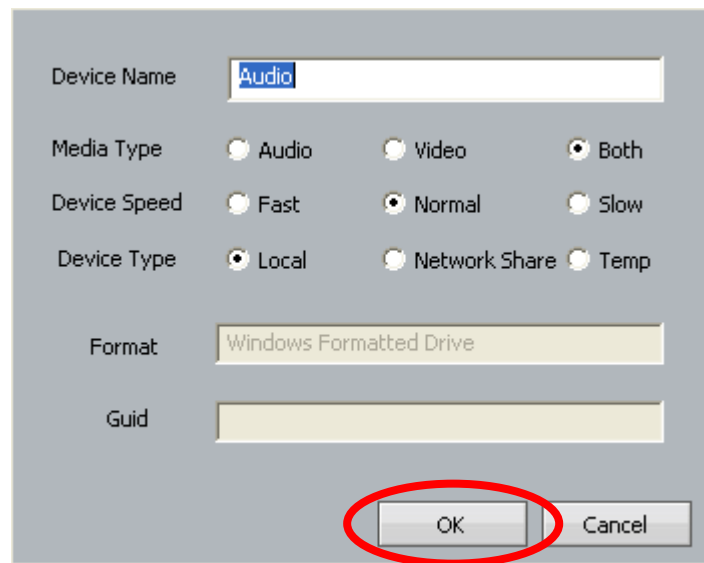
- Click “OK”
- The following “Media Management” window will appear.

In the example, the host machine has 3 Hard drives installed

- System C: (For Operating System and Applications)
- Audio D: (Main Audio Drive, for all audio files)
- Video E: (Video Drive, for any “Pyxis Track” Video files)



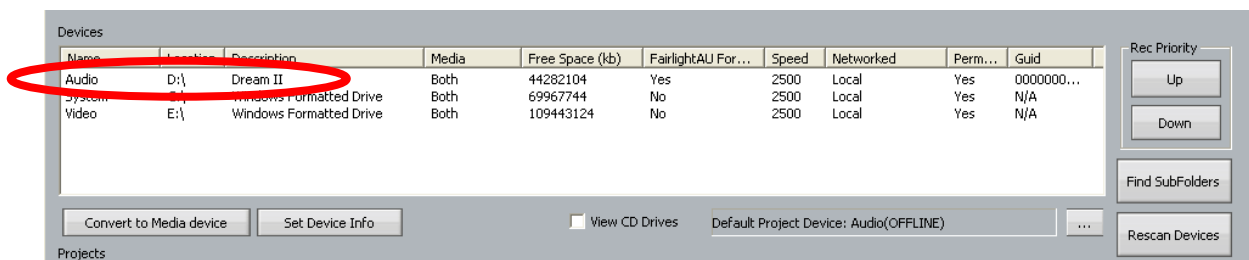
- Select your Audio Drive ("Audio D:\ " in the example)
 - Click "Convert to Media Device"
- The following Dialog box will appear



- Simply accept the defaults and click "OK"

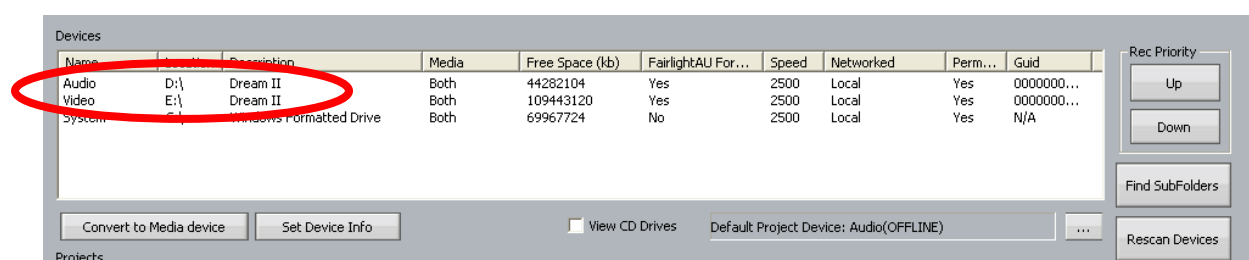
You will be returned to the Media Management window.

Note that the Audio Drive is now listed as a "DREAMII" device in the "Description" column



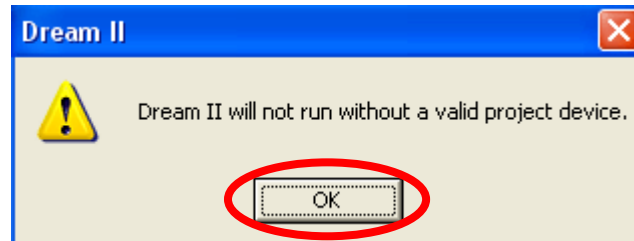
It is recommended that you also convert your Video drive, so that you can easily import video media into the Xynergi application as required. You can do this by selecting the Video drive and following the same procedure as above.

NB that it is strongly recommended NOT to convert your Operating System hard drive to a Fairlight Media Device



Once you have converted all of your connected Audio and Video hard drives to Fairlight Media Devices, Double click the Xynergi Controller "F key" to call the Xynergi "Qwerty Keyboard", And hit the ESC key on your Xynergi Controller, to exit the Media Management application.

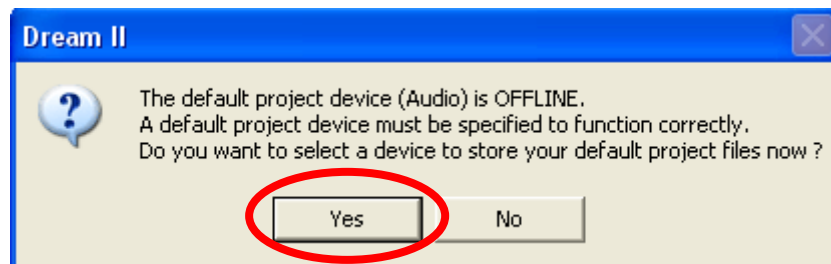
Xynergi will display a warning message indicating that while you have just converted your Audio and Video drives into Fairlight Media Devices, Xynergi still does not know which drive to use as its Default Project Device.



- Simply Click "OK"

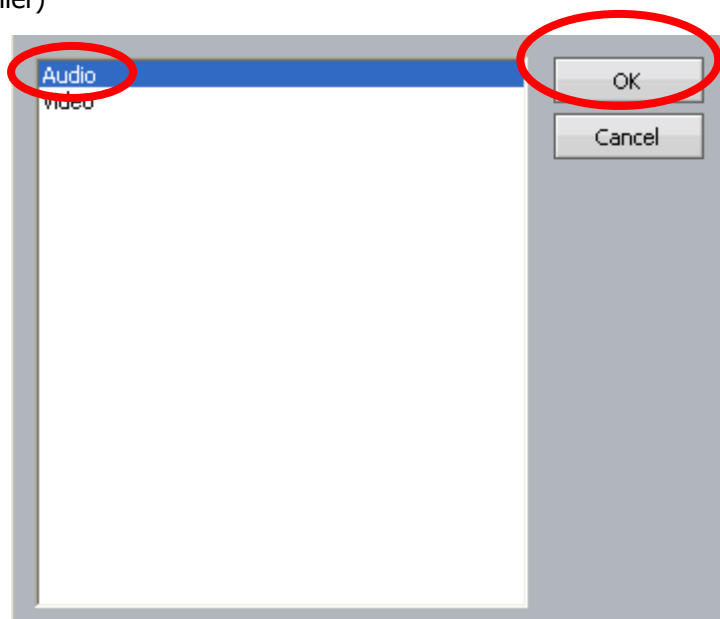
Re-launch the Xynergi Application, by pressing the "F" key on your Xynergi Controller, then pressing the "Xynergi" key

On launching the Xynergi application, you will be asked to specify a Default Project Device



- It is recommended that you click "YES"

The following dialog box will appear, with a list of all available Fairlight Media Devices. (You will recognize the devices as matching the hard drives you converted into Fairlight Media Devices earlier)



- It is recommended that you click on your main Audio drive to select it,
- and click "OK" to nominate it as the Default Project Device

NB: additional drives can be converted to Fairlight Media Devices from within the Xynergi application at any future time.

To prepare a drive for use with XYNERGI, from WITHIN the Xynergi application, select **Setup > Media and Project Management** from the XYNERGI main menu, above the Edit Screen. Select the device from the devices list and click on **Convert to Media device**. Please also set the **Device Info** accordingly (in most cases, this is set automatically and does not need to be changed)...

To use a network connected device, first create a mapped network drive or folder in Windows Explorer. This can now be selected in the device panel and converted to a XYNERGI Media Device as above.

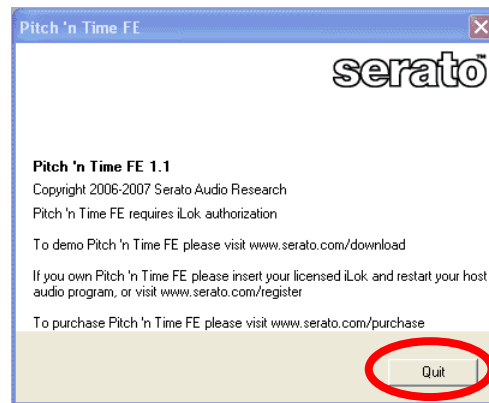
** Please note that audio and video files can only be played from a designated Media Device. If you try to play files from any other disk, you will receive an error message.

From here, the Xynergi Editing application will open on your Primary monitor.

You will be asked if you wish to run the evaluation version of Serato's "Pitch 'n Time FE" plug-in.

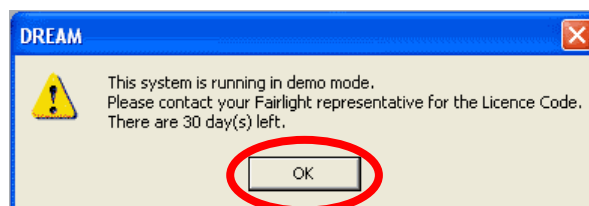
NB Serato "Pitch 'n Time FE" version can be purchased direct from Serato by visiting

<http://www.serato.com/purchase>



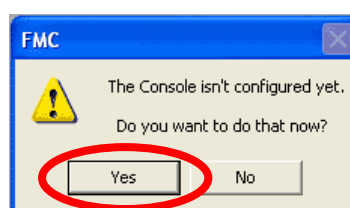
- We recommend you click "Quit", to continue your first Xynergi launch.

The next dialog box indicates the number of days remaining on your "Demo Mode" licence. This license has all features of the Xynergi Media Production Centre unlocked and ready for use.



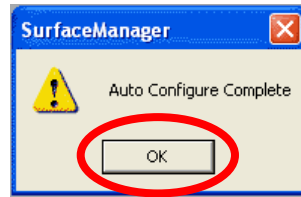
We will cover licensing your system in a few moments. However, to continue opening the Xynergi application, simply click "OK".

The Xynergi Mixing application has a small helper application called "Surface Manager", which acts as a bridge between the Xynergi Mixing application and the actual console. Surface Manager will now ask to be configured to work with the Xynergi Controller.



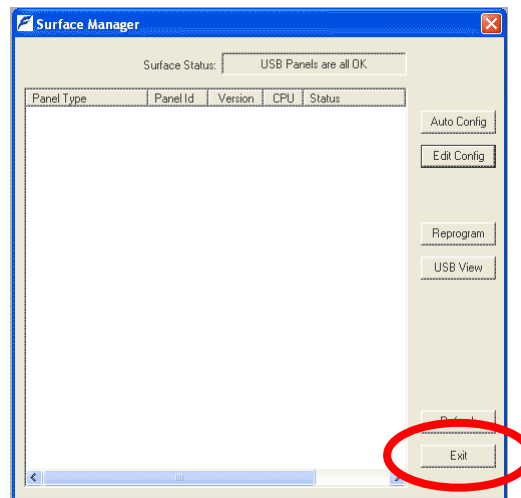
- Click "Yes"

Thankfully, Surface Manager recognizes the Xynergi console, and will “Auto Configure” itself as required.



- Click “OK”

As a courtesy for users running larger Xynergi consoles, Surface Manager will now display a list of “Control Panels” that it has detected on the system. The Xynergi Controller, being a fundamental piece of Fairlight console hardware, is not displayed. This is normal.



- To exit Surface Manager, Click “Exit”

The Xynergi Mixing application will now open on your Secondary monitor. You are ready to start a New Project, open the Xynergi Demo Project, explore the “Xplain” online help system, or license your Xynergi Media Production Centre.

Licensing

Congratulations! – you have just installed Xynergi software and it is running in a demo mode with all available software options ‘unlocked’ for you to use and enjoy. This demo licence will run for 30 days.

To obtain your ‘permanent’ licence and be permanently licensed for the system and options that you have purchased, please visit

<http://www.fairlightau.com/secure>

and follow the prompts. You will be asked for the dongle ID number of your CC-1 card and the serial number of your SX-20 (you will find both these numbers on a sticker at the back of this manual).

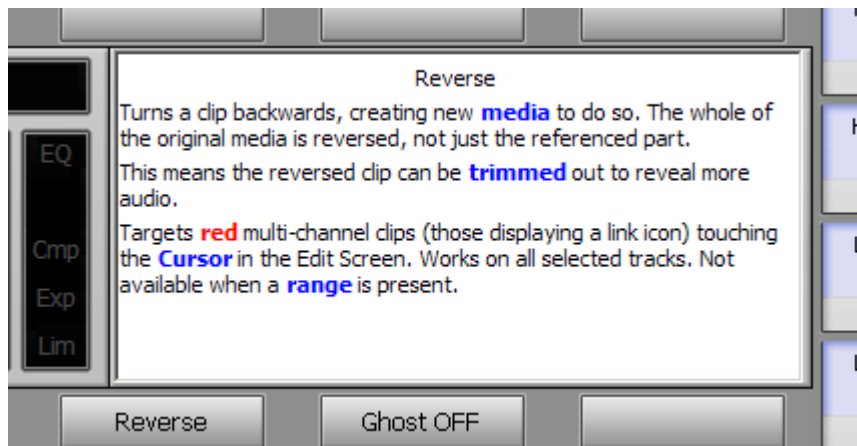
Validation of these two numbers will confirm your system and options.

Learning the Xynergi Application

Xynergi has a built-in on-demand help system called Xplain. It has two modes of operation:

Xplain-button

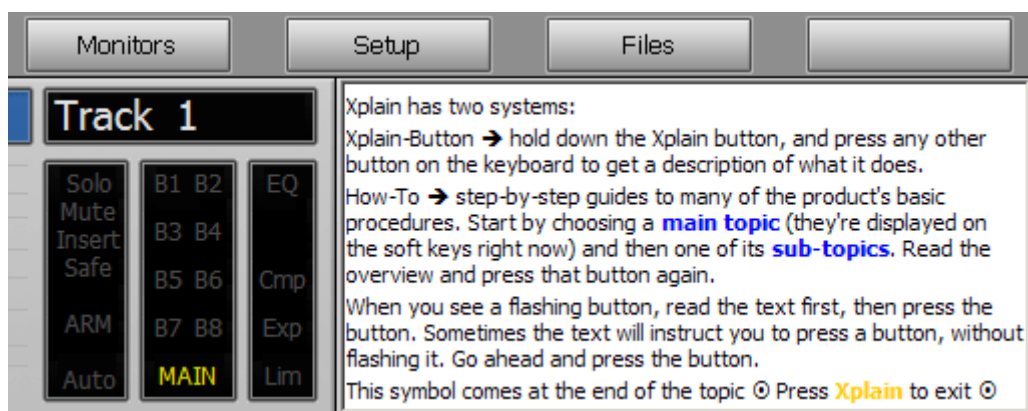
Press any button while holding down Xplain, and the system will display an Xplanation.



In this case, the "Reverse" soft key was pressed while holding down the Xplain button.

Xplain How-To

Press the Xplain button to display a list of topics on the Pad soft keys.



Three of the How-To topics are shown above, just after pressing the Xplain button.

Pressing a topic displays an overview, with the topic button flashing. After reading the overview, press the flashing button and follow the suggested steps. In many cases the system will flash other buttons, indicating that they should be pressed next. If more than one button is flashing, you can press either to get the same result.

Bold Blue text highlights important terminology, and helps you to skim through the topic. **Bold Yellow** text represents buttons that you should press.

At the end of the topic you'll see the Ⓢ symbol. Press **Xplain** to exit.

It's recommended that you look at all of the Basics topics first, and then follow up with others that are of immediate interest.

If you prefer to just launch into using the product, you can refer to the How-To sequences at any time, and they'll guide you from wherever you currently are to the place you need to be.

Xynergi Fold-Out

In your Xynergi package you'll find a full-size colour print of the Tactile Controller, identifying its sections and their functions. This can be useful as a reference while using Xplain.

The Demo Project

It's useful while learning the system to have some ready-made audio to practice on. Your installation DVD contains a project called Xynergi_demo.DR2. Copy this project to your audio drive (see Designating Fairlight Media Devices above) and it will be available when you need it.

It's a great idea to have this project in a known place when you need it. The Xynergi User Manual and Xplain system will assume that the project can be found in the following place:

D:\FairlightAU\Projects\Xynergi_demo\Xynergi_demo.DR2

... where D:\ is the name of your designated audio drive.

Chapter 5 - Adding your Fader Surface

Note: This section is for models MPC-144F and MPC230F Only

The MPC-144F and 230F packages come supplied with a Fairlight "Sidecar" fader console. With your basic Xynergi Media Production Centre now running, it's time to install the "Sidecar" unit to the system.

NB the Xynergi Media Production Centre also supports HUI control of the Mackie Control Extender Pro fader unit, via an Edirol UM-1 USB – MIDI converter (Mackie and Edirol items Not Included)

Fader Surface Hardware Installation

Connect the Sidecar directly to your PC using the USB cable supplied.

The system will recognise the newly connected USB device and start loading drivers. The procedure is the same as described in the section "**Connecting Your Xynergi Controller**", in Chapter 3. This procedure will run **many times**.

When it has finished, run the Xynergi Configurator to integrate the faders into your system. It is found at: Start → All Programs → Fairlight → Xynergi → Utils → Configure Xynergi.

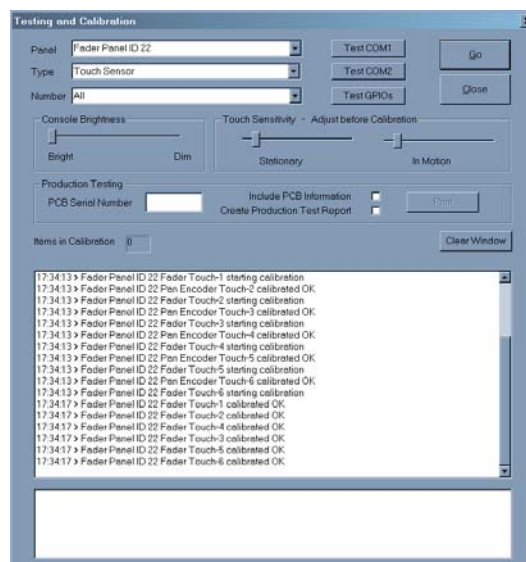
Select the required fader configuration, and click "OK".

XYNERGI Software Calibration.

For correct operation of the Fairlight "Sidecar", it is required to perform a "Software Calibration" within the Xynergi Mixing screen.

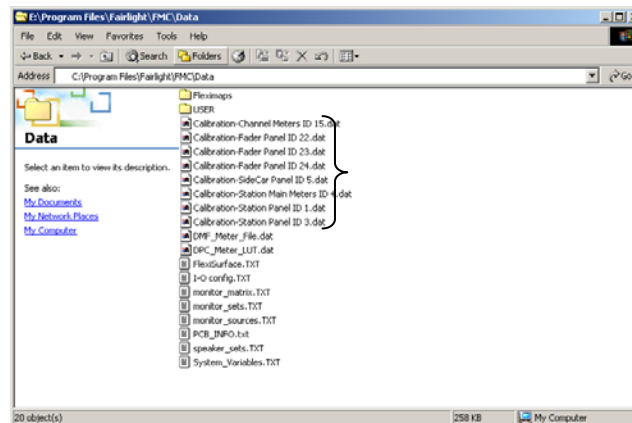
To calibrate your pots, faders, and touch sensors:

- Launch Xynergi Media Production Centre application
- Hold down Shift + CTRL + C. This will bring up the calibration window on the Xynergi Mixing Screen



XYNERGI Calibration is a highly automated procedure that allows the XYNERGI system to compensate for physical changes caused by vibration in transit and for changes in touch sensitivity caused by location specific atmospheric conditions.

For your information, the actual calibration files can be found in the following directory on the Xynergi surface PC: **C:\Program Files\Fairlight\FMC\Data**



Run the calibration routine for each control type as instructed below:

- Select one panel at a time from the Panel list,



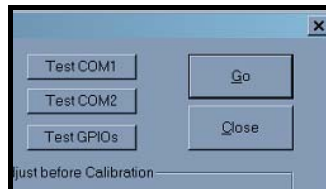
- Select control types *appropriate* for the panel, one at a time from the **Type** list,



- Select **All** from the **Number** list,



- then click **Go**.



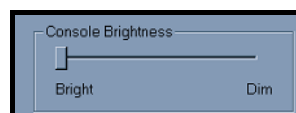
The calibration progress is indicated by the **Items in Calibration** count.

Follow the instructions for each control type as described below. Continue this process for each panel.

If only one or two controls fail calibration, you may select those specific controls from the **Number** list and adjust the touch sensitivity for those controls before running the calibration again.

Console Brightness

The overall brightness of key illumination is adjustable in four steps. Use the mouse to move the brightness control between **Bright** and **Dim**. Adjust the console brightness to compensate for the ambient lighting level in your studio.



Touch Sensitivity

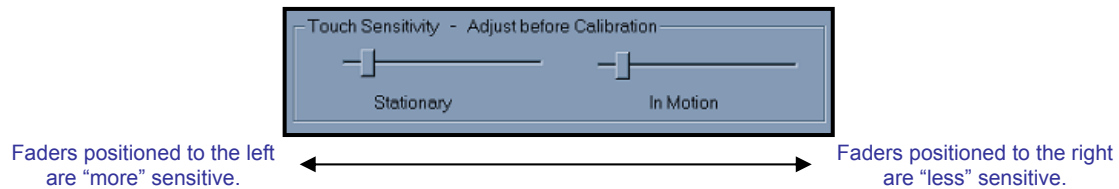
The touch sensitivity controls provide offsets for the touch sense thresholds for the knobs and faders on the Console control surface. Leave these controls in their default positions until you have calibrated the touch sensors. The touch sensitivity controls are only required to be adjusted if, after running the calibration, the system reports that the Stationary or In Motion thresholds are too low or too high. If

this occurs for a large number of touch sensors, adjust the appropriate control and run the calibration again.

The touch sensitivity controls can be specific to the particular controls that are selected in the **Panel** and **Number** drop-down lists.

Again ... If only one or two controls fail calibration, you may select those specific controls from the **Number** list and adjust the touch sensitivity for those controls before running the calibration again.

If you notice the touch illumination of some controls lighting when they are not being touched, it may be necessary to run the calibration routine again.



The touch calibration utility will remember any "Stationary" and "In Motion" touch level offsets. This means that the touch offset sliders will jump to the stored position of any one motorized pot that is selected. A touch calibrate of multiple pots ("ALL") will overwrite any stored levels with the offset levels currently displayed. This should make individual tweaking of touch sensors a little easier.

Encoder Calibration

Rotary encoders must be calibrated to compensate for physical changes during transit.

All rotary encoders are automatically calibrated without intervention.

- Select **Encoder** from the **Type** list.
- Select **All** from the **Number** list.
- Click **Go**.

Check the calibration report window messages to make sure the encoders are calibrated successfully. Occasionally, due to temperature extremes or rough handling during transport, the encoders cannot be successfully calibrated by software, and need a hardware tweak adjustment.

If this happens, contact your local Fairlight distributor for service.

Fader Calibration

All faders are automatically calibrated without intervention.

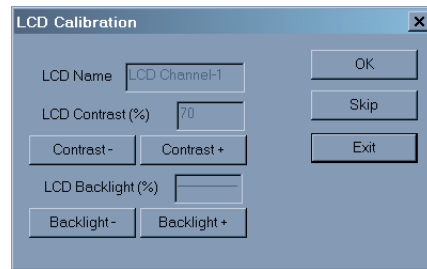
- Select **Fader** from the **Type** list.
- Select **All** from the **Number** list.
- Click **Go**.

Check the calibration window messages to make sure the faders are calibrated successfully.

LCD Calibration

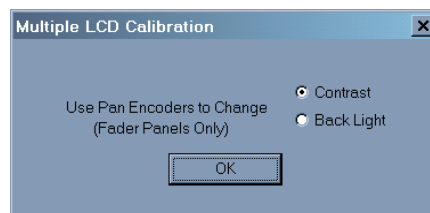
LCD contrast and backlight levels can be adjusted.

- Select **LCD** from the **Type** list.
- Select **All** from the **Number** list.
- Click **Go** and the LCD calibration window will be displayed.



Click the **Contrast +/-** buttons to change the contrast. LCDs on fader panels and meter panels are not individually controllable. A bar is shown in the Backlight value box for LCDs whose backlight is not controlled directly. Click the **OK** button to move on to the next LCD, *when a value is displayed* it may be changed to control all the LCDs in the group.

Click the **Backlight +/-** buttons to change the backlight level. When **All** Panels and **All** LCDs are selected for a fader panel, *the pan encoder* can be used to adjust the Backlight and Contrast. The following window will be displayed allowing you to select which value to control.



- Click **OK** to save the values for the current LCD and move on to the next LCD. Click **Skip** to skip the current LCD and move on to the next one.

Click **Exit** to complete LCD calibration.

Click **OK** to exit the Calibration and Testing application.

Chapter 6 - Troubleshooting Your Xynergi Installation

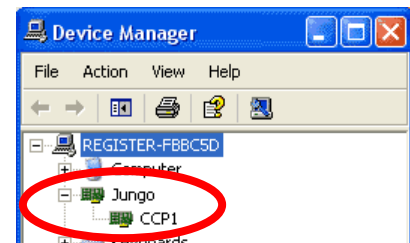
Each of the major components in your Xynergi system must be installed correctly, and in correct sequence, for your system to operate properly.

The following is a rapid "Troubleshooting Checklist" for each component. If you suspect a problem with the behaviour of any part of the system, please follow the Checklist steps in order, and retest after each step.

NOTE! While every effort has been made to ensure reliability of the Xynergi Hardware, Fairlight cannot physically test every possible permutation of Host PC hardware available. The "Host PC" section of Chapter 2 in this document provides some basic compatibility information. For more detailed CC-1 Host PC Compatibility Information, please contact your nearest Fairlight Distributor.

CC-1 PCI-e card Checklist

- Ensure CC-1 card is physically seated in PCI-e slot properly
- Check there are no motherboard components or PC cabling obstructing the CC-1 from sitting correctly
- Ensure device driver is detected in "Device Manager"
 - Check Device Manager for a "Jungo" device category,
 - the CC-1 card should be listed under this category (See example at Right)
- - Shut Down your Xynergi System
("Start" button > Shut Down > Shut Down)
 - Cold Boot the system
(NOTE : This is NOT the same as a simple "RESTART"!)
- Contact your nearest Fairlight Distributor





SX20 Power Up Checklist

- Check front panel Power and Status lights (Green Power + Flashing BLUE status)
- Ensure DVI cable is correct type (DVI – I cable)
- Ensure DVI cable is correct length (MAXIMUM 5 metres / 15 feet)
- Ensure DVI cable is connected to SX20
- Ensure DVI cable is connected to CC-1
- Ensure Mains Power connected to SX20
- Ensure Rear Mains Power switch is ON
- Ensure PC is ON
- Switch SX20 off at rear Mains power switch, wait 10 seconds, and turn back ON.
- Contact your nearest Fairlight Distributor

Xynergi Controller Checklist

- Ensure PC VGA card drivers are up to date
- Ensure Controller has Mains power/Plug pack connected OK

- Ensure correct USB cable is connected OK
- Ensure USB cable is connected to Host PC USB2.0 port OK
- Ensure that you do not touch encoders during while the ESC key flashes BLUE
- Ensure "Xynergi" system tray icon is visible 
- Ensure "Tritton" system tray icon is visible 
- - Ensure Xynergi Media Production Centre application is closed
 - Disconnect the USB cable from your Xynergi Controller
 - Disconnect the power supply from your Xynergi Controller
 - Wait at least 10 seconds
 - Re-connect the Power supply to your Xynergi Controller
 - Wait at least 10 seconds
 - Re-connect USB cable to your Xynergi Controller
 - Both Xynergi and Tritton icons should appear in the Host PC System Tray, and Xynergi Controller should display the Qwerty keyboard.
- - Shut Down your Xynergi System
("Start" button > Shut Down > Shut Down)
 - Cold Boot the system
(NOTE : This is NOT the same as a simple "RESTART"!)
- Contact your nearest Fairlight Distributor